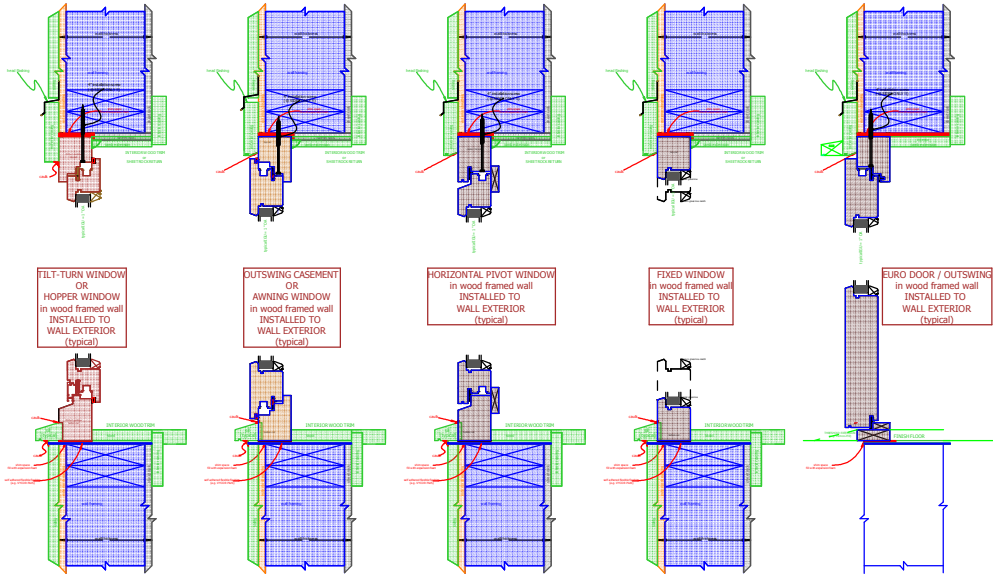


**WINDOW- & DOOR INSTALLATION  
HH WINDOWS & DOORS  
SEATTLE, WA**

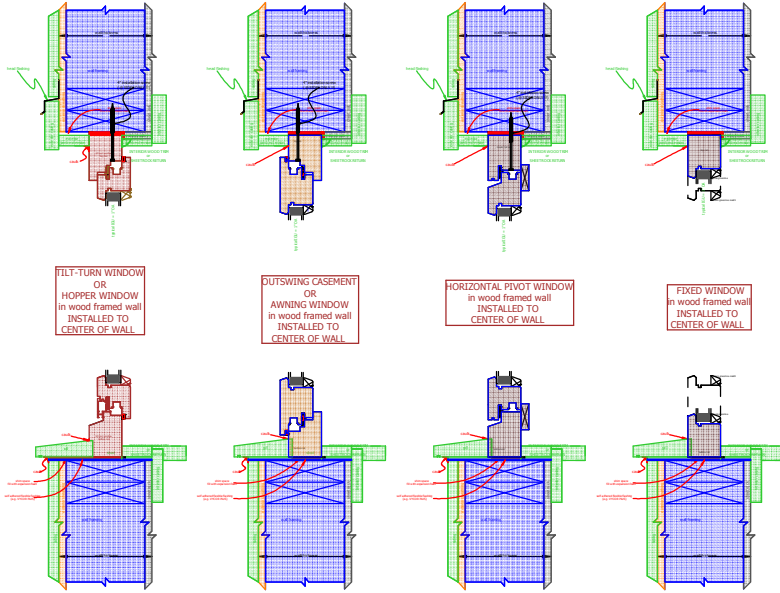
**PLANE OF INSTALLATION:  
WALL EXTERIOR**

**WALL EXTERIOR**



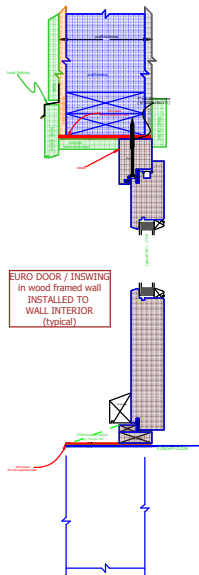
**PLANE OF INSTALLATION:  
WALL CENTER**

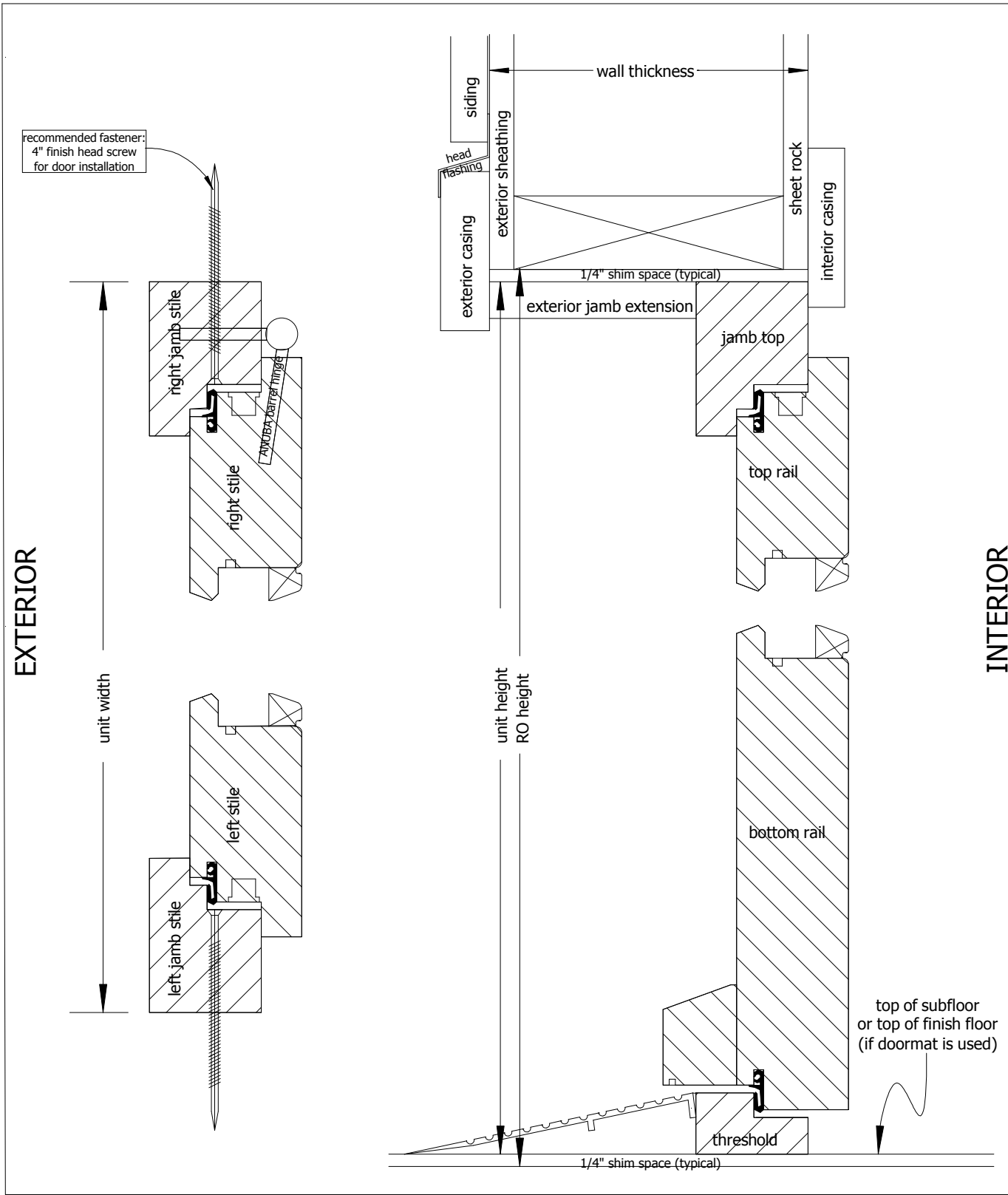
**WALL CENTER**



**PLANE OF INSTALLATION:  
WALL INTERIOR**

**WALL INTERIOR**



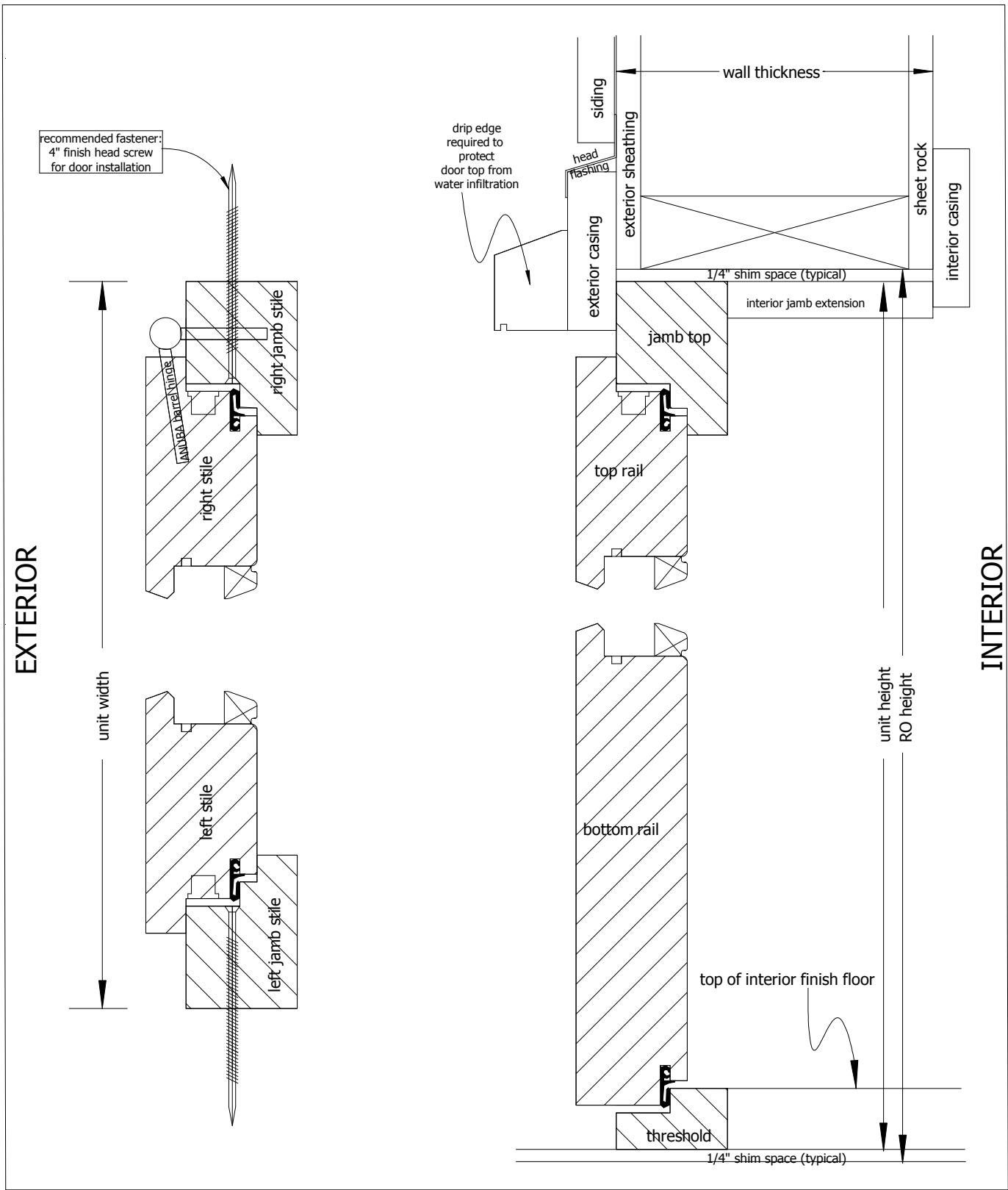


TITLE: TYPICAL EURO DOOR INSTALLATION (INSWING)

file: 58mm\eurodoor\inswing\typical door installation (inswing)

**HH WINDOWS & DOORS**

tel: 206-763-3438 fax: 206-527-8724 www.hhwindows.com



TITLE: TYPICAL EURO DOOR INSTALLATION (OUTSWING)

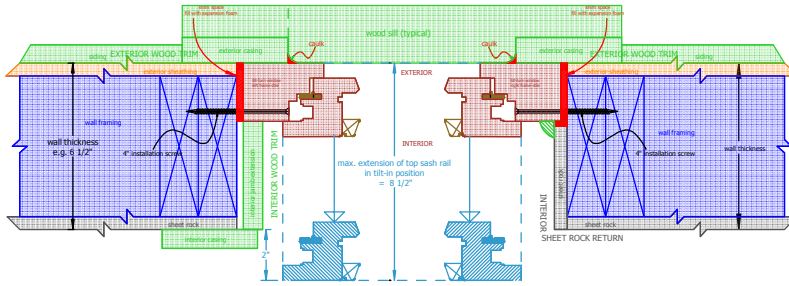
file: 58mm\eurodoor\outswing\typical door installation (outswing)

**HH WINDOWS & DOORS**

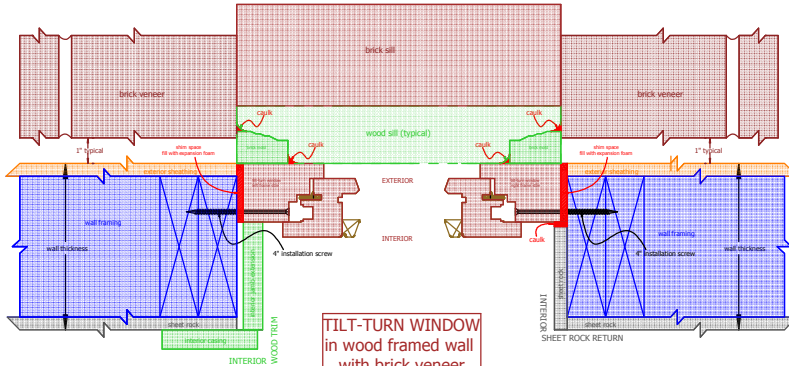
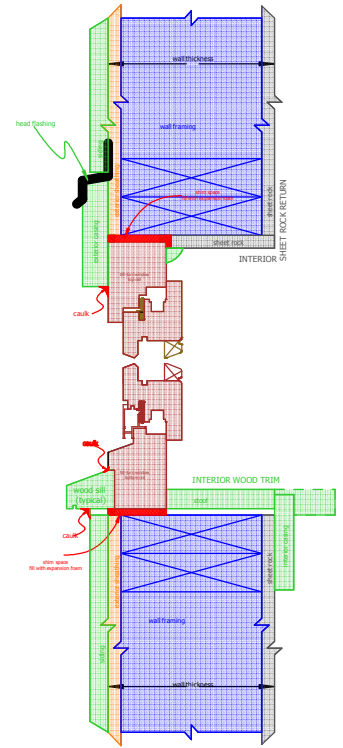
tel: 206-763-3438 fax: 206-527-8724 www.hhwindows.com

# INSTALLATION OF TILT-TURN WINDOWS HH WINDOWS & DOORS SEATTLE, WA

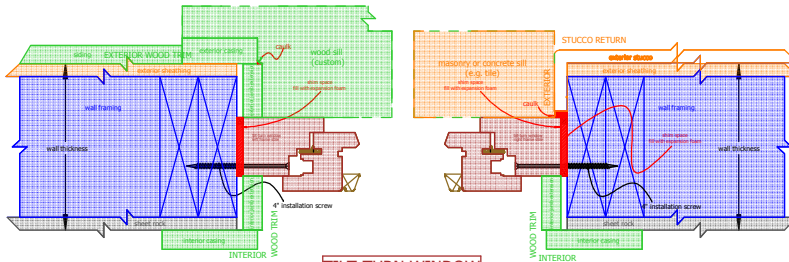
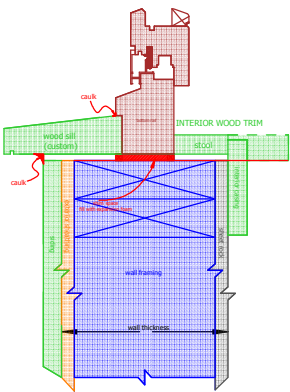
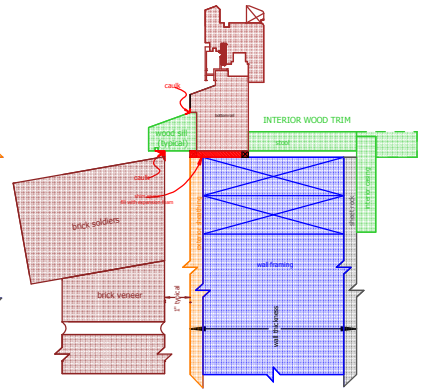
© 2010 HANSON WINDOW  
11000 1st Avenue, Seattle, WA 98148



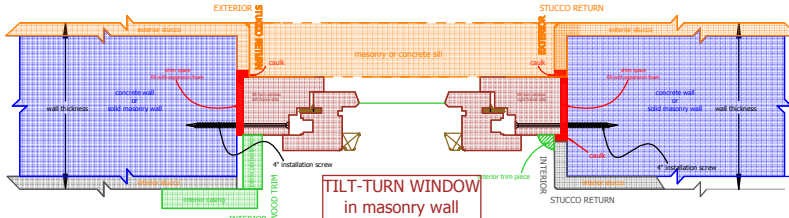
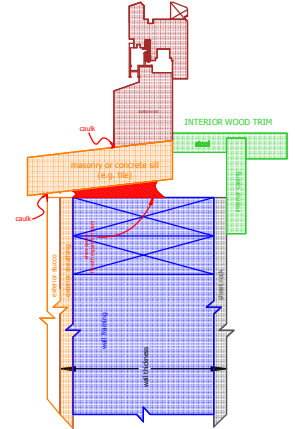
TILT-TURN WINDOW  
in wood framed wall  
INSTALLED TO  
WALL EXTERIOR  
(typical)



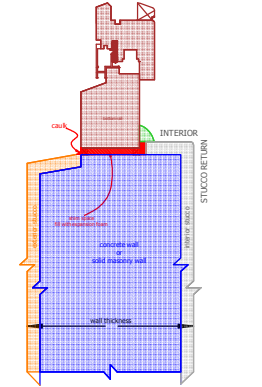
TILT-TURN WINDOW  
in wood framed wall  
with brick veneer  
INSTALLED TO  
WALL EXTERIOR

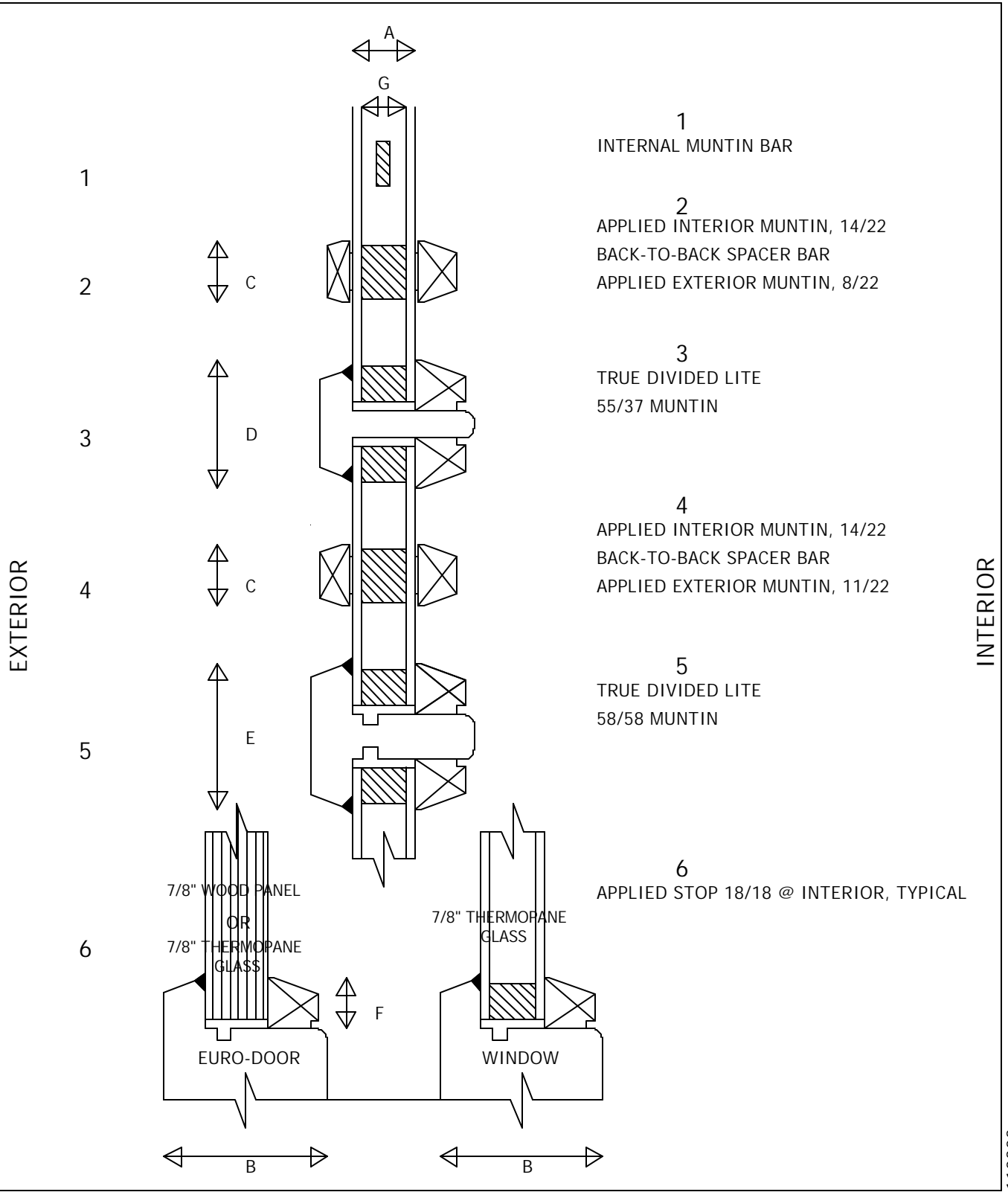


TILT-TURN WINDOW  
in wood framed wall  
INSTALLED TO  
WALL CENTER



TILT-TURN WINDOW  
in masonry wall  
INSTALLED TO  
WALL CENTER





- 1  
INTERNAL MUNTIN BAR
- 2  
APPLIED INTERIOR MUNTIN, 14/22  
BACK-TO-BACK SPACER BAR  
APPLIED EXTERIOR MUNTIN, 8/22
- 3  
TRUE DIVIDED LITE  
55/37 MUNTIN
- 4  
APPLIED INTERIOR MUNTIN, 14/22  
BACK-TO-BACK SPACER BAR  
APPLIED EXTERIOR MUNTIN, 11/22
- 5  
TRUE DIVIDED LITE  
58/58 MUNTIN
- 6  
APPLIED STOP 18/18 @ INTERIOR, TYPICAL

110303

TITLE: STOPS AND MUNTINS (TYPICAL) scale: 1/2 file: 03catalogue\sections\general\stop&muntin <b>HH WINDOWS &amp; DOORS</b> tel: 206-763-3438 fax: 206-527-8724 www.hhwindows.com		INCHES	MM		INCHES	MM
	A	0.88	22	F	0.71	18
	B	2.28	58	G	0.63	16
	C	0.88	22	H		
	D	1.81	46	I		
	E	2.04	52	J		

#3