

TRIPLE SASH OVERLAP promotes high insulation against air and water penetration

FULLY CONCEALED HINGES

SIMULATED-DIVIDED LITE MUNTINS ("SDL") available as add-on option in any lite pattern

TRUE-DIVIDED LITE MUNTINS ("TDL") available as add-on option in any lite pattern

JAMB EXTENSIONS available for any wall thickness

DUAL-PANE GLASS 1" THICK
Full range of glazing options: Low-E, Argon, Tempered, Obscure, Triple pane etc.

TILT-TURN WINDOW HANDLE
wide selection of handle designs and -finishes

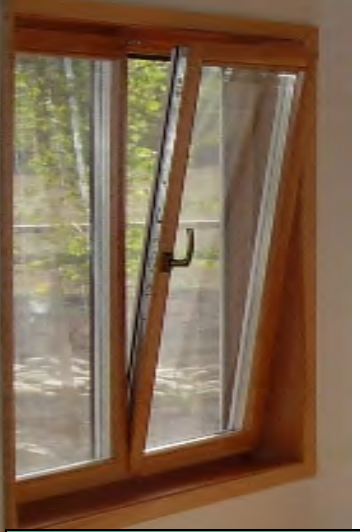
GLASS SPACERS available in silver, bronze and champagne

3 WAY ADJUSTABLE SASH
(up-down/ left-right/ in-out)

HEAVY DUTY EPDM GASKET ON ALL FOUR SIDES

CUSTOM SIZES AND CUSTOM DESIGN
including **NON-MULLION FRENCH TILT-TURN, GANGED (MULLED) UNITS** and **LARGE SASH SIZES**

TILT-TURN WINDOW (single sash)



FRENCH TILT-TURN WINDOW (dual sash / non-mullion)

2 3/8" THICK SASH AND FRAME WITH DOUBLE-MORTISE-AND-TENON JOINERY
made from triple laminated vertical grain Douglas-Fir or a wood of your choice

SCREENS (available as add-on option)

TILT-TURN HARDWARE made in Germany
multi-point locking on all four sides for increased security and weather tightness

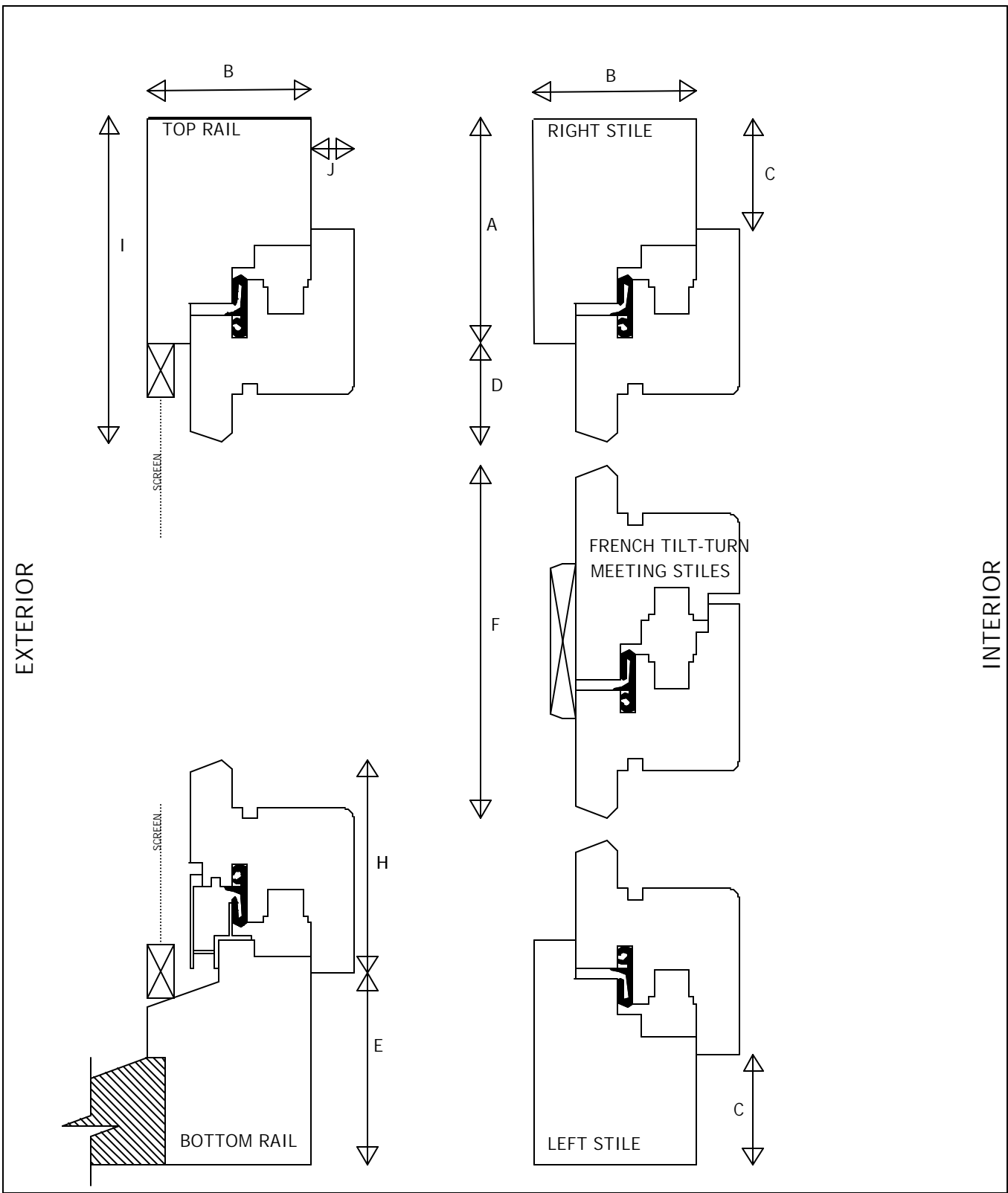
EXTERIOR SILLS (available as add-on option)

EXTERIOR ALUMINUM CLADDING (available as add-on option)

Locking point

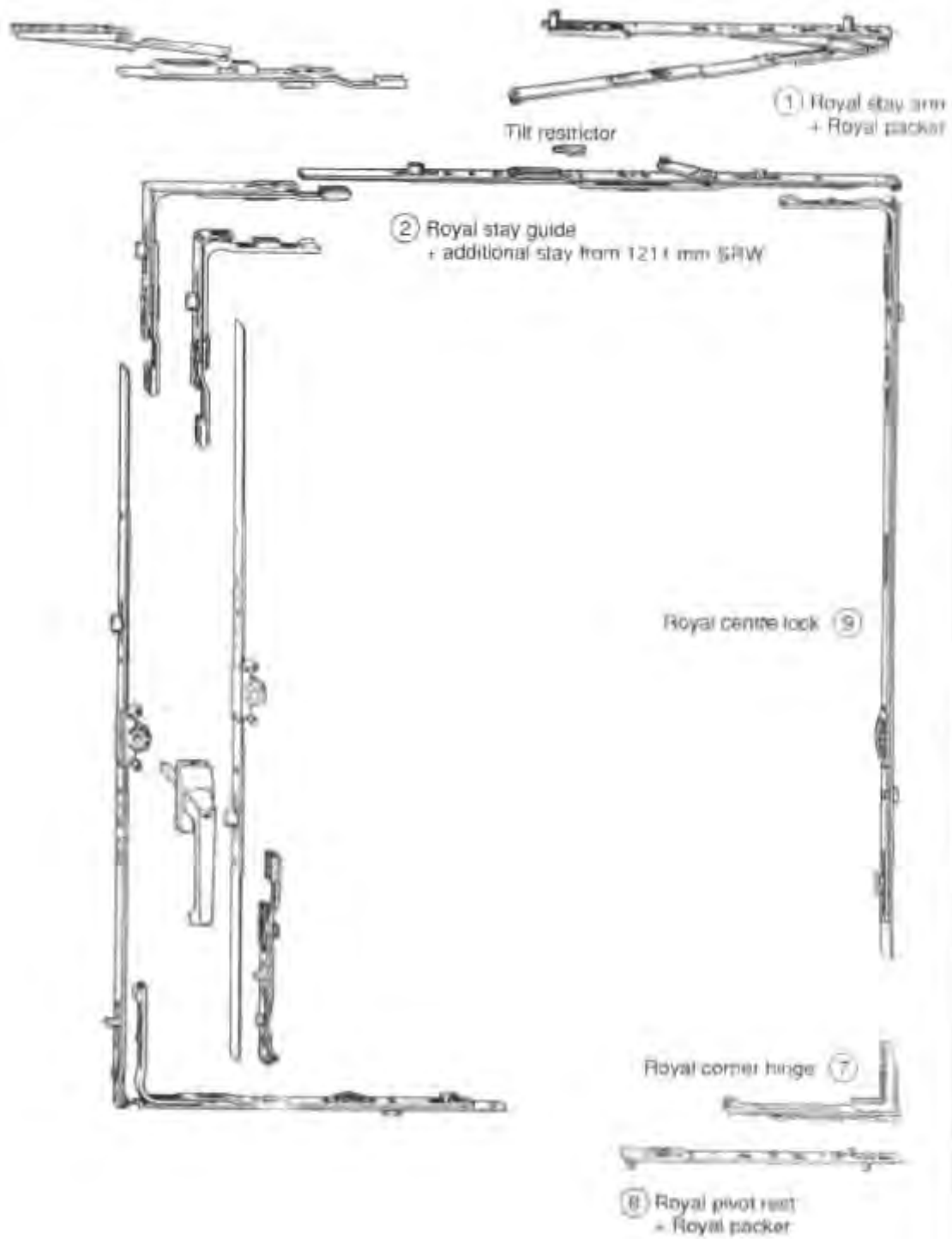
HH WINDOWS & DOORS SEATTLE, WA
TILT-TURN WINDOW
(dual function: tilt-in at top and in-swing casement)

WIDTH: 17" - 58" (tilt-turn, single sash)
WIDTH: 42" - 116" (French tilt-turn)
HEIGHT: 17" - 98"

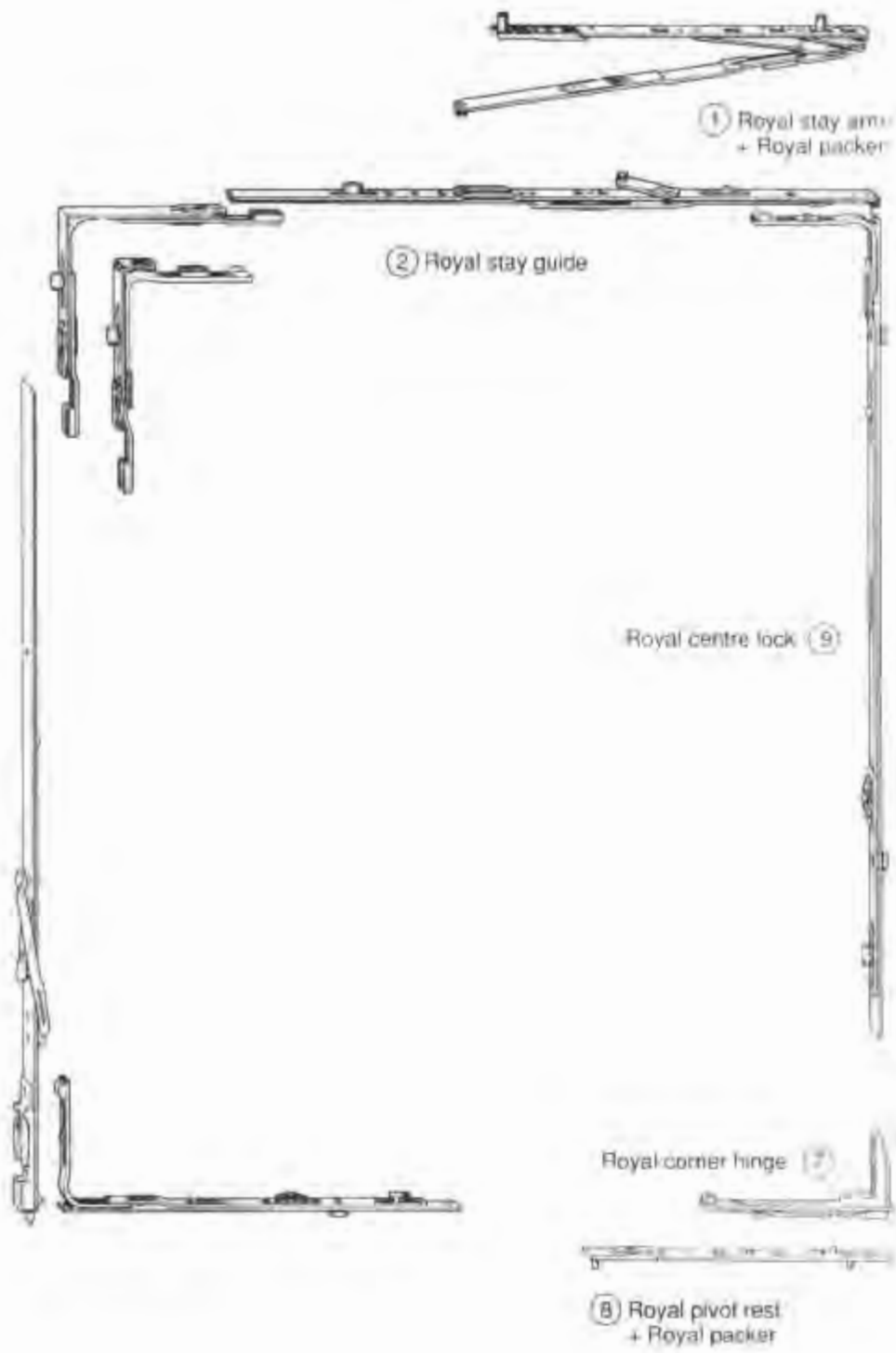


110303

TITLE: TILT-TURN WINDOW		INCHES		MM		INCHES		MM	
scale: 1/2		A	3.15	80	F	4.92	125		
file: 03catalogue\sections\tilt-turn\TT-1		B	2.28	58	G				
HH WINDOWS & DOORS		C	1.54	39	H	2.99	76		
tel: 206-763-3438 fax: 206-527-8724 www.hhwindows.com		D	1.38	35	I	4.53	115		
# 4		E	2.68	68	J	0.59	15		



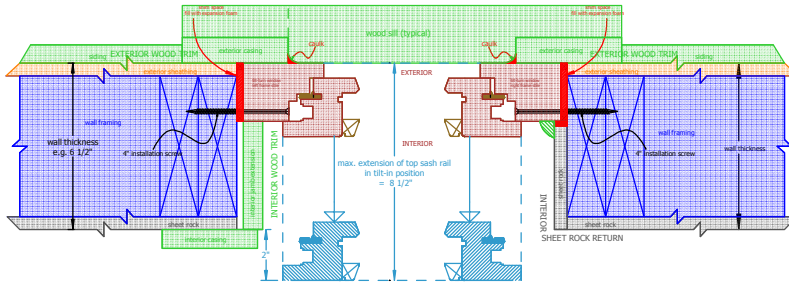
HARDWARE COMPONENTS FOR TILT & SWING WINDOW



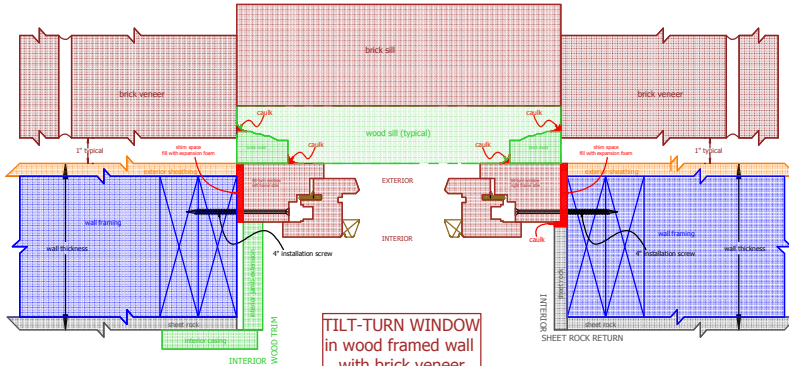
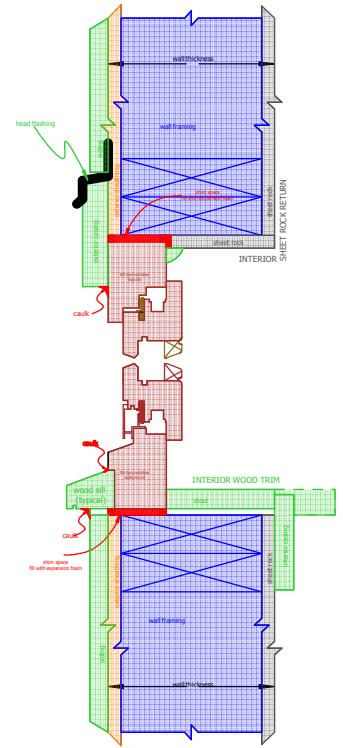
HARDWARE COMPONENTS FOR TILT & SWING WINDOW, PASSIVE SASH, FRENCH CASEMENT WINDOW (= NO MULLION)

INSTALLATION OF TILT-TURN WINDOWS HH WINDOWS & DOORS SEATTLE, WA

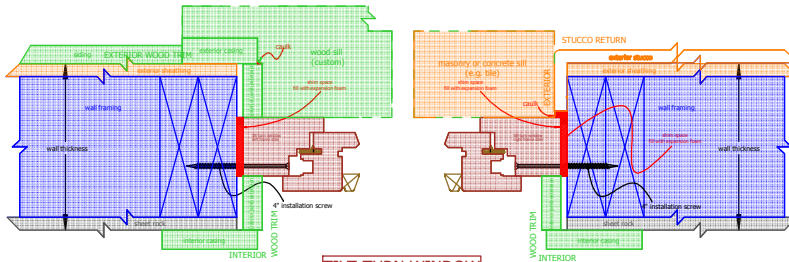
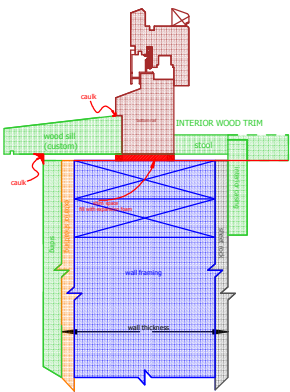
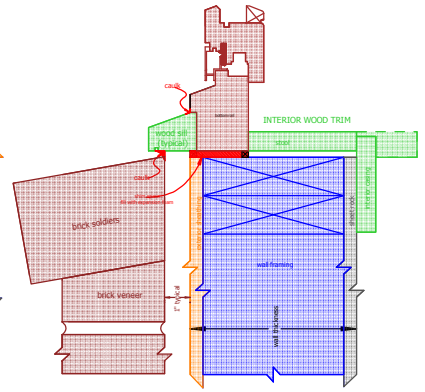
© 2010 HANSON WINDOW
11000 1st Avenue, Seattle, WA 98148



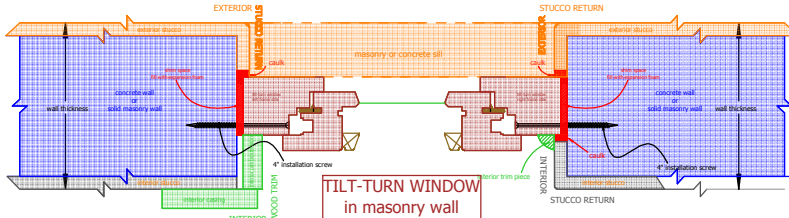
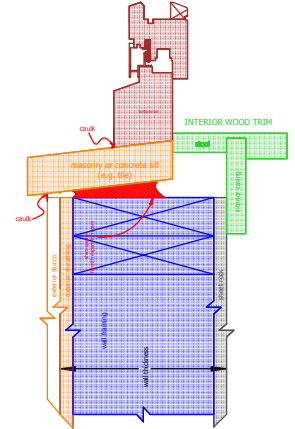
TILT-TURN WINDOW
in wood framed wall
INSTALLED TO
WALL EXTERIOR
(typical)



TILT-TURN WINDOW
in wood framed wall
with brick veneer
INSTALLED TO
WALL EXTERIOR



TILT-TURN WINDOW
in wood framed wall
INSTALLED TO
WALL CENTER



TILT-TURN WINDOW
in masonry wall
INSTALLED TO
WALL CENTER

